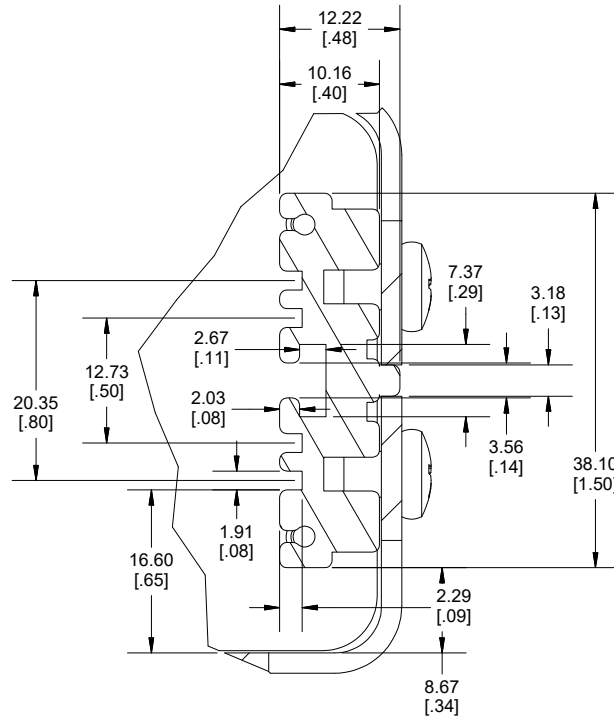
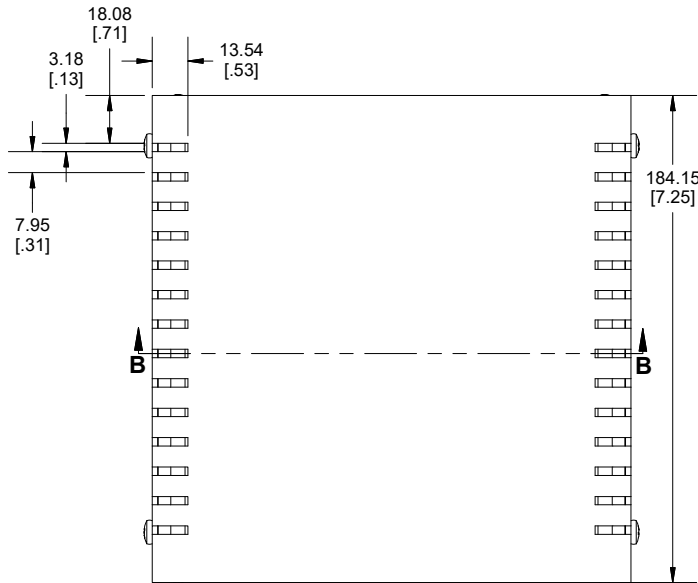
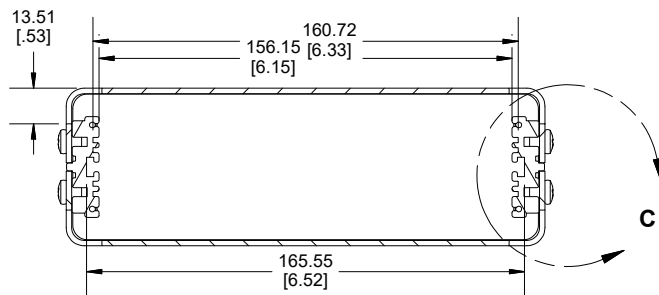


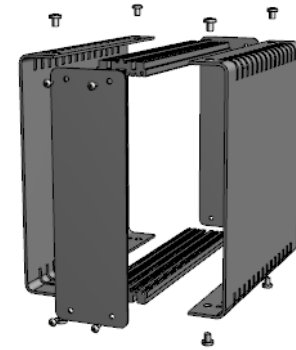
SECTION A-A



DETAIL C  
SCALE 1.3



SECTION B-B



Enclosures can be Factory Modified (Milling, Drilling, Printing etc.)  
Contact Factory ([modshop@hammfg.com](mailto:modshop@hammfg.com)) for quotes  
Solid models of this enclosure available in .stp or .x\_t  
(Part number and text placement/orientation on our products are subject to change, we do not recommend using them as a locating reference for modification purposes)

NOTE	
Purchased assembly includes base, cover, end panels, extrusions, cover screws, panel screws and rubber feet.	
<b>Recommended Cover screw torque -- 14-15 lbf-in (160-170 cN-m)</b>	
1402	
1402DV Regular Enclosure	
BASE: 12 ga. Aluminum (beige) (Pkg 2)	
PANEL: 14 ga. Aluminum (natural) (Pkg 2)	
Extrusion: Aluminum (natural) (Pkg 2)	
Cover screws: (#10-32 X 1/4" self tap) (Pkg 8)	
Panel screws: (#4-24 X 1/4" self tap) (Pkg 18)	
Self Adhesive Rubber feet (Pkg 4)	

Dimensions:  
mm  
[inches]



**HAMMOND  
MANUFACTURING.**

**1402DV**

[www.hammondmfg.com](http://www.hammondmfg.com)