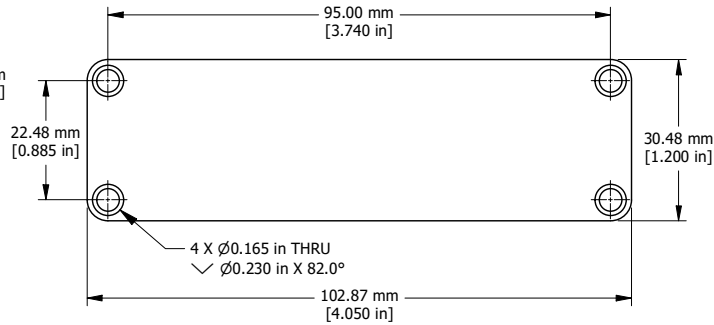
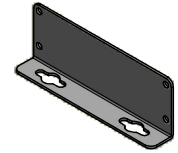
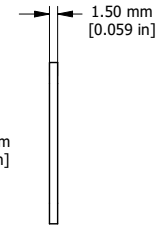


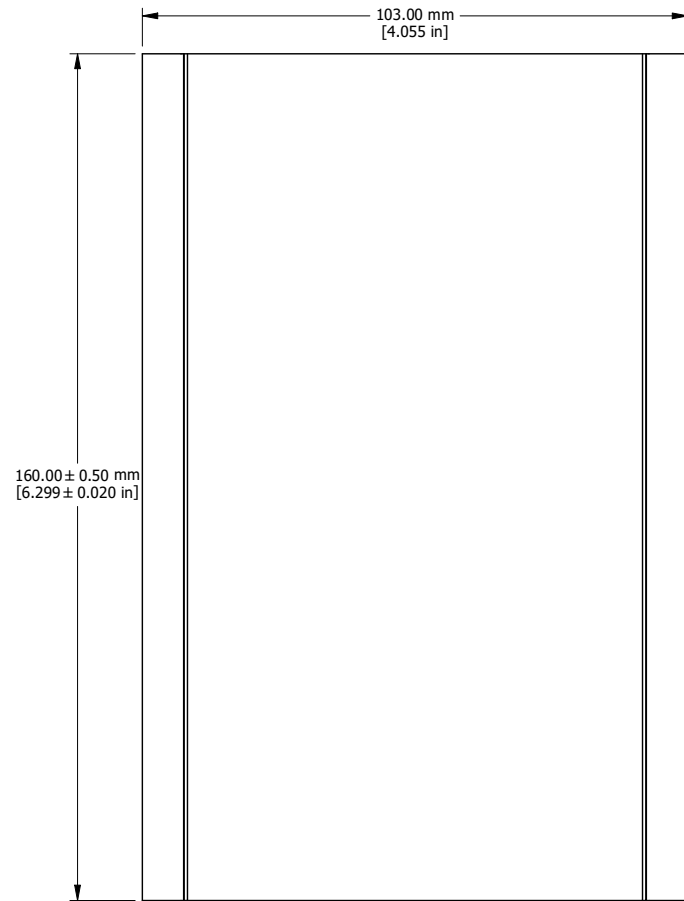
EXTRUSION



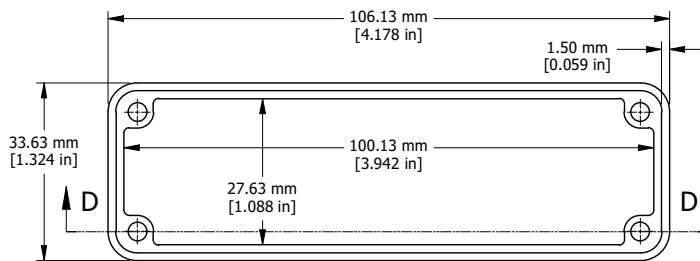
END PLATE



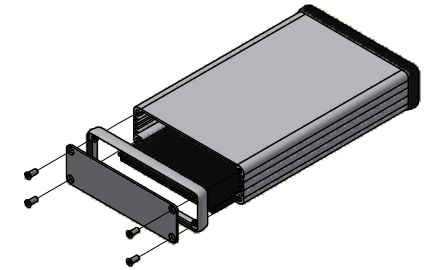
OPTIONAL FLANGE END PANELS
1455LF



EXTRUSION DESIGNED FOR 100MM WIDE PC BOARD



OPEN BEZEL



EXPLODED ASSEMBLY VIEW

Enclosures can be Factory Modified (Milling, Drilling, Printing etc.)
Solid models of this enclosure available in STEP or IGES.
Contact Factory mjm@hammondmfg.com

| NOTE | |
|--|--|
| Purchased assembly includes box, plastic bezels, end panels, #6 Taptight screws and self adhesive rubber feet. | |
| Box made from Extruded Aluminum 6063. | |
| Bezels made with polycarbonate. | |

| 1455L1601 | |
|------------------------------|-------------|
| PART NUMBERS | |
| Clear Anodized | 1455L1601 |
| Black Anodized | 1455L1601BK |
| Blue Anodized | 1455K1601BU |
| Red Anodized | 1455K1601RD |
| ACCESSORIES | |
| See website for accessories. | |

