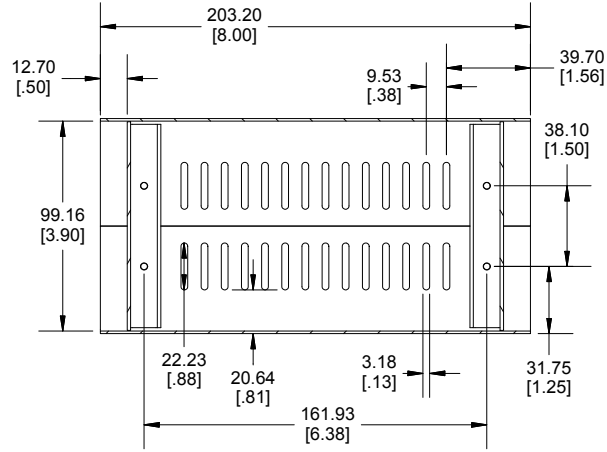
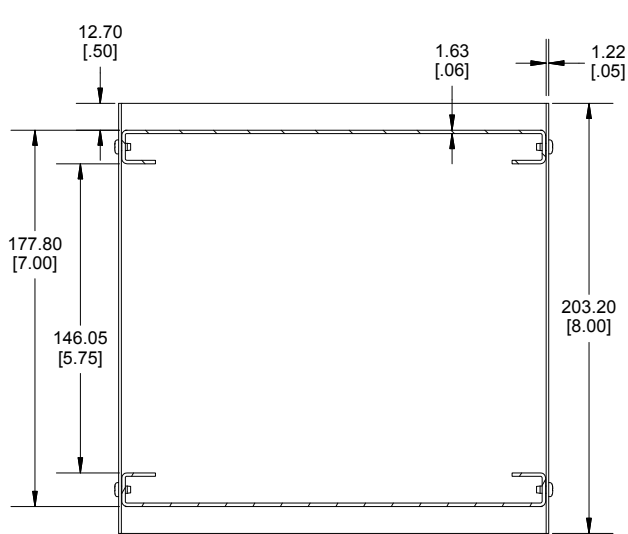
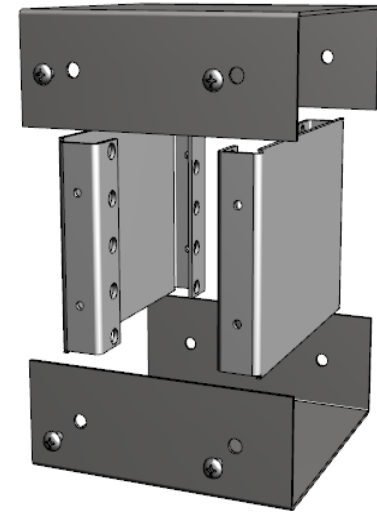


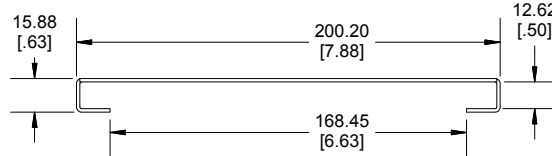
END VIEW



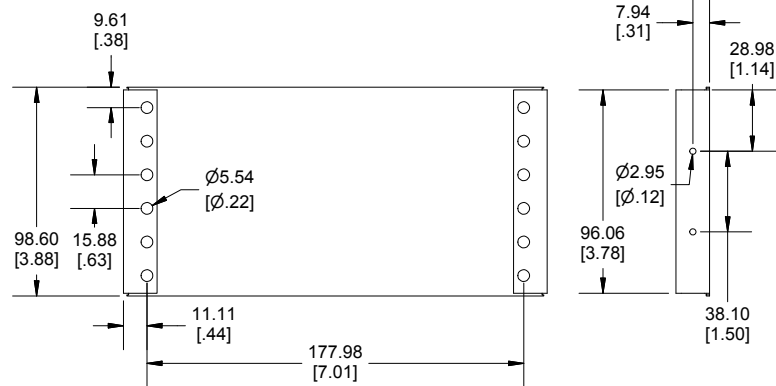
**SECTION A-A
SIDE VIEW**



**SECTION B-B
TOP VIEW**



END PLATE



Enclosures can be Factory Modified (Milling, Drilling, Printing etc.)
Contact Factory (modshop@hammondmfg.com) for quotes
Solid models of this enclosure available in .stp or .x_t
(Part number and text placement/orientation on our products are subject to change,
we do not recommend using them as a locating reference for modification purposes)

NOTE

Purchased assembly includes Top, Bottom, Black End Plate, Grey End Plate,
8 Enclosure screws, and 4 Rubber feet.

Recommended Cover screw torque 125-150 cN-m (11-13.3 lbf-in)

1458

1458 Regular Enclosure

Top / Bottom powder coated
Gulf Blue RAL 5021

1458VD4B

Top / Bottom powder coated
Black RAL 9011

1458VD4

ACCESSORIES

Nickel plated Enclosure screws
[#6-32 x 1/4"] Self-Tapping (Pkg 8)

1421J8

Rubber Feet (Pkg 24)

1421T3

Dimensions:
mm
[inches]

**HAMMOND
MANUFACTURING**

1458VD4

www.hammondmfg.com