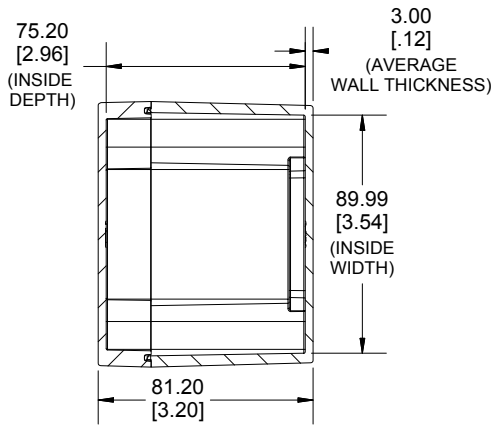
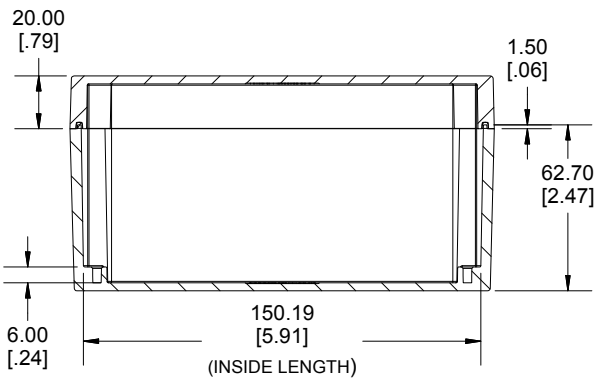
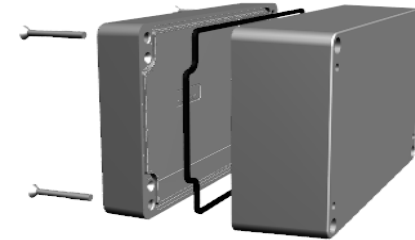


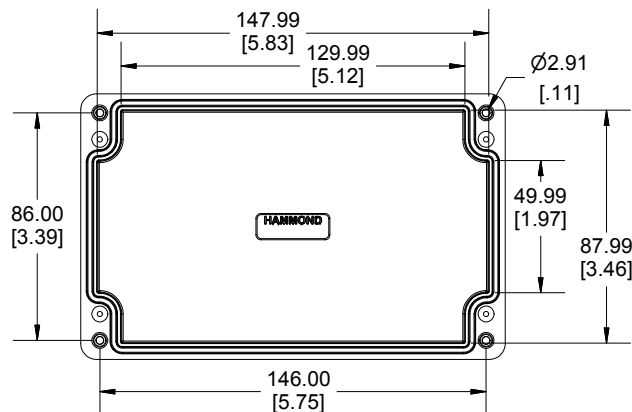
TOP VIEW



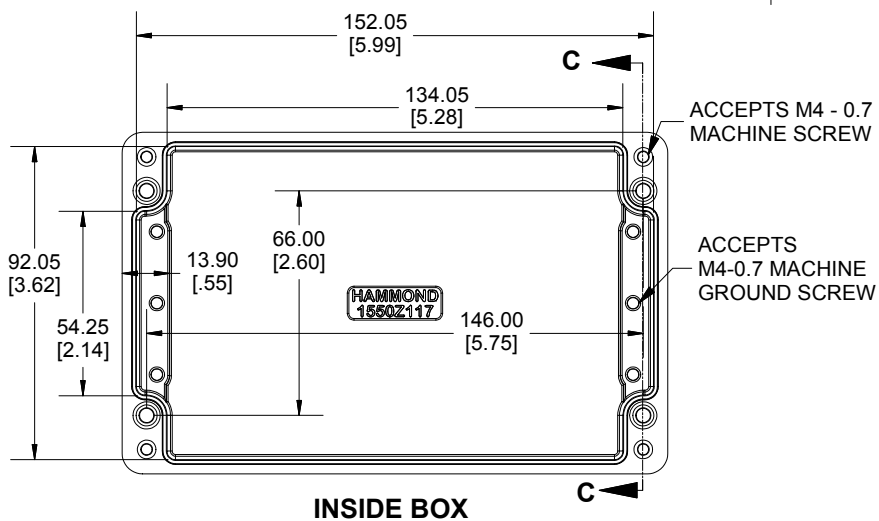
SECTION A-A  
END VIEW



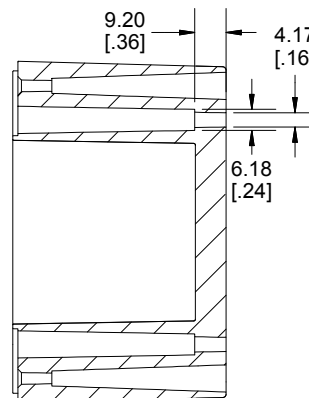
SECTION B-B  
SIDE VIEW



INSIDE LID



INSIDE BOX



SECTION C-C  
MOUNTING HOLE

Dimensions:  
mm  
[inches]



Enclosures can be Factory Modified ( Milling, Drilling, Printing etc.)  
Contact Factory [mjm@hammondmfg.com](mailto:mjm@hammondmfg.com) for quotes  
Solid models of this enclosure available in STEP or IGES.  
(Part number and text placement/orientation on our products are subject to change,  
we do not recommend using them as a locating reference for modification purposes)

NOTE	
Purchased assembly includes box, lid, silicone gasket, and 4 cover screws. Box and lid are made from Diecast Aluminum Alloy.	
Screws should not be torqued past 5-7.5 lbf.in ( 50 -75 cN.m)	
PART NUMBERS	
1550Z117 Enclosure	
Basic Enclosure	1550Z117
Black Enclosure	1550Z117BK
ACCESSORIES	
Pre-Formed Silicone Gasket (2 Pack)	1550Z116GASKET
Stainless Steel Cover screws (30 Pack) [M4 - 0.7 x 30mm]	SC1550Z116-30
Copper Ground Hardware (50 Pack) [M4 - 0.7 X 6mm / M4 Washer]	SCGM4-50

**HAMMOND  
MANUFACTURING.**

**1550Z117**  
[www.hammondmfg.com](http://www.hammondmfg.com)