

2600/2700 series terminal cases

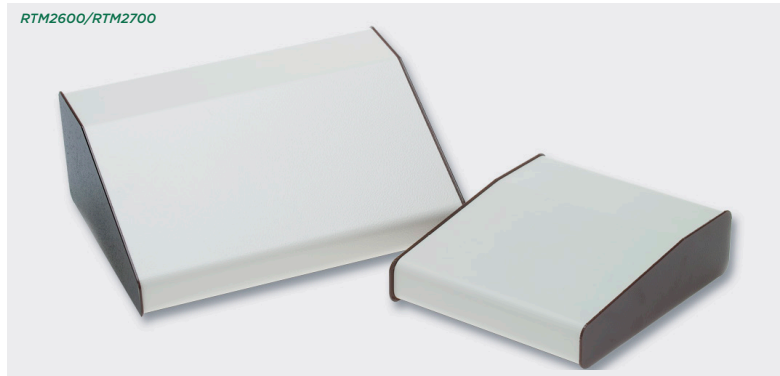
Product overview

Ideal enclosures for laboratory equipment, keyboards, access and security applications.

- 2 part aluminium construction
- Easy assembly with 4x M3 screws running through rubber feet into base
- 4x rubber feet supplied as standard
- 2600/2700 series has been designed to meet the requirements of IP40

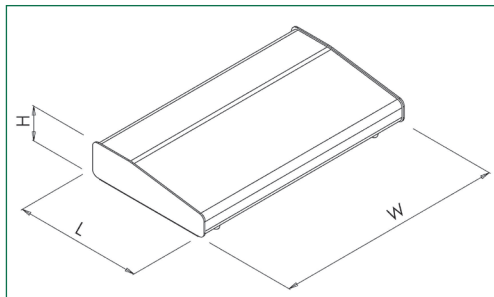


RTM2600/RTM2700



SPECIFICATION

Material	Base 2mm thick aluminium Lid 1.6mm thick aluminium
Protection class	2600/2700 series has been designed to meet the requirements of IP40
Standard colours	Top beige as standard Base brown as standard Other colours available to order
Standard unit includes	Lid and base 4x M3 machine screws 4x rubber feet



PART NO.	LENGTH	WIDTH	HEIGHT
RTM2601-BR/B	210mm	178mm	55mm
RTM2602-BR/B	210mm	280mm	55mm
RTM2603-BR/B	210mm	381mm	55mm
RTM2604-BR/B	210mm	483mm	55mm
RTM2701-BR/B	210mm	178mm	80mm
RTM2702-BR/B	210mm	280mm	106mm
RTM2703-BR/B	210mm	381mm	106mm
RTM2704-BR/B	210mm	483mm	106mm

KEY FEATURES

IP40 rated | Easy assembly | 2 part aluminium construction



268

HANDHELD CASES

292

UNIVERSAL ENCLOSURES

318

HEAVY DUTY AND ELECTRICAL ENCLOSURES

342

DESKTOP AND INSTRUMENT CASES

348

DEVELOPMENT BOARD ENCLOSURES

367

ROOM SENSOR ENCLOSURES

370

CUSTOM SIZED ENCLOSURES