



268
HANDHELD CASES

292
UNIVERSAL
PLASTIC
ENCLOSURES

317
HEAVY DUTY
AND ELECTRICAL
ENCLOSURES

341
DEVELOPMENT
BOARD
ENCLOSURES

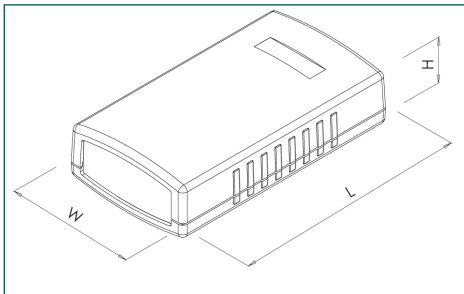
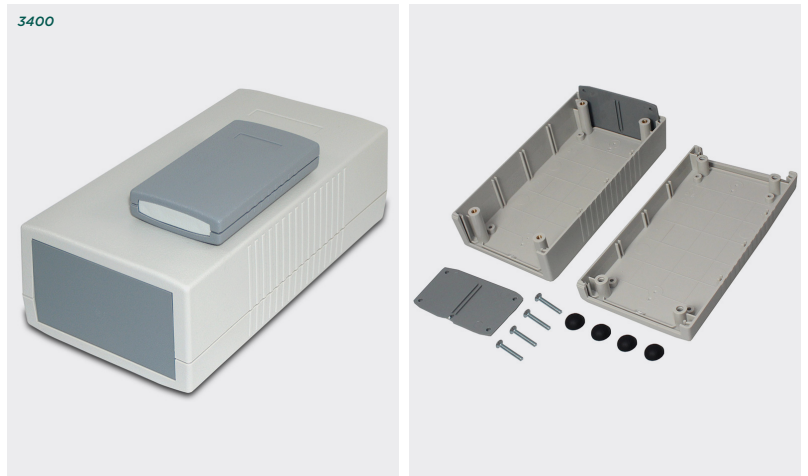
369
VERSATILE IOT
AND SENSOR
ENCLOSURES

3400 Series Multipurpose Electronic Equipment Enclosure

Product overview

Versatile range of end-panel four-part construction enclosures, available in four lengths and nine heights.

- Lid, base and end panels moulded in high impact UL94-HB or UL94-V0 ABS
- Integral mounting guides in U-shell lid and base for vertical PCB mounting
- Bosses in base and lid for horizontal PCB mounting
- Ergonomically curved lid and base
- Four part construction for complete access and fitting of electronics
- Four M3 or self-tapping screws countersunk into base and fixed into lid
- Textured non-scratch surface
- 3400 series has been designed to meet the requirements of IP54



SPECIFICATION	
Materials	UL94-V0 or high impact ABS
Protection class	3400 series has been designed to meet the requirements of IP54
Standard colours	UL94-V0- Lid and base dark grey similar to RAL 7040, end panels light grey High impact UL94-HB - Lid and base light grey similar to RAL 9002, end panels dark grey
Fixing styles	Self-tapping- 3400-30 to 3400-34 M3 brass inserts- 3400-36 to 3400-59
Standard unit includes	Base and lid 2x end panels 4x fixing screws 4x rubber feet / screw covers

HIGH IMPACT ABS - UL94-HB	FLAME RETARDANT ABS - UL94-V0	LENGTH	WIDTH	HEIGHT
3400-30	3400-01	90mm	50mm	16mm
3400-31	3400-03	90mm	50mm	24mm
3400-34	3400-04	90mm	50mm	32mm
3400-36	3400-07	120mm	60mm	30mm
3400-38	3400-10	120mm	60mm	40mm
3400-40	3400-12	120mm	60mm	50mm
3400-43	3400-13	150mm	80mm	30mm
3400-45	3400-16	150mm	80mm	45mm
3400-47	3400-18	150mm	80mm	60mm
3400-52	3400-21	190mm	100mm	40mm
3400-54	3400-22	190mm	100mm	60mm
3400-59	3400-25	190mm	100mm	80mm

KEY FEATURES

Moulded in ABS | Attractive curved design | PCB mounting



PLASTIC ENCLOSURES

