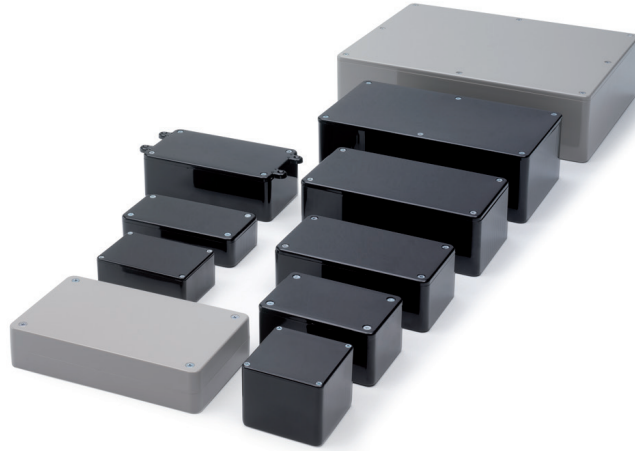


UNIVERSAL ENCLOSURES

2000 Series General Purpose ABS Cases

The most comprehensive, competitive range of general purpose electronic enclosures for universal applications.

- Polished external surfaces
- Integral card guides accept 1.6mm PCBs
- Low draught angle for mounting control elements on side walls
- Excellent characteristics for milling, drilling and cutting
- Lid mounted by four M3 machine screws into brass inserts in base
- PCB Adaptors (included) for horizontal mounting of PCBs



2000 Standard Lid

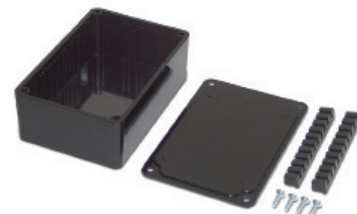
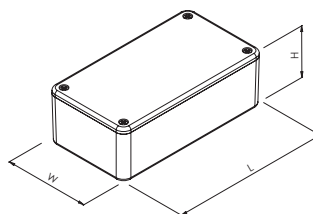
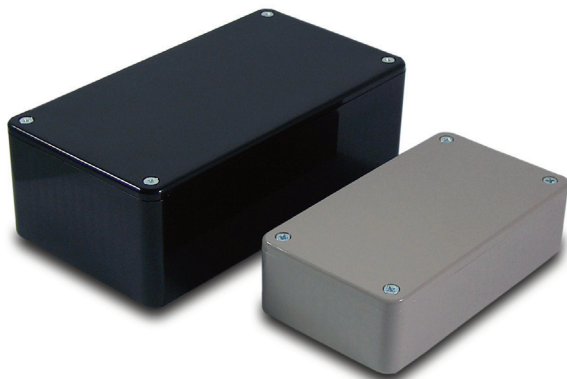
Extensive range of electronic enclosures with solid ABS lid, designed for a broad range of applications.

- Lid and base moulded in ABS
- Lid mounted by four M3 machine screws
- Brass inserts in base for repetitive removal of the lid
- Polished finish for ease of cleaning
- Excellent properties for machining
- Integral mounting guides to accept 1.6mm PCB's
- PCB Adaptors (included) for horizontal PCB mounting

SPECIFICATION	
Materials	Lid & base high impact ABS
Operating Temperature	Resistant to temperatures of up to 85°C
Protection class	IP54
Standard colours	Grey(GY), Black(BK), Ivory(WH), Orange (ORG)
Standard unit includes	Base & lid 4x M3 machine screws PCB adaptors
Options (MOQ's apply)	UL94-V0 Flame retardant Different colours

GREY	BLACK	IVORY	ORANGE	LENGTH	WIDTH	HEIGHT
*BIM2008/18-GY/GY	*BIM2008/18-BLK/BLK	*BIM2008/18-WH/WH	*BIM2008/18-ORG/ORG	55mm	55mm	42mm
*BIM2000/10-GY/GY	*BIM2000/10-BLK/BLK	*BIM2000/10-WH/WH	*BIM2000/10-ORG/ORG	75mm	50mm	27mm
BIM2001/11-GY/GY	BIM2001/11-BLK/BLK	BIM2001/11-WH/WH	BIM2001/11-ORG/ORG	85mm	56mm	39mm
BIM2002/12-GY/GY	BIM2002/12-BLK/BLK	BIM2002/12-WH/WH	BIM2002/12-ORG/ORG	100mm	50mm	25mm
BIM2003/13-GY/GY	BIM2003/13-BLK/BLK	BIM2003/13-WH/WH	BIM2003/13-ORG/ORG	112mm	62mm	31mm
BIM2007/17-GY	BIM2007/17-BLK	-	-	112mm	62mm	31mm
BIM2004/14-GY/GY	BIM2004/14-BLK/BLK	BIM2004/14-WH/WH	BIM2004/14-ORG/ORG	120mm	65mm	40mm
RTM2030/30-GY	RTM2030/30-BLK	-	-	142mm	80mm	30mm
BIM2005/15-GY/GY	BIM2005/15-BLK/BLK	BIM2005/15-WH	BIM2005/15-ORG/ORG	150mm	80mm	50mm
BIM2006/16-GY/GY	BIM2006/16-BLK/BLK	BIM2006/16-WH/WH	BIM2006/16-ORG/ORG	190mm	110mm	60mm
BIM2009/19-GY/GY	-	-	-	250mm	200mm	64mm

* BIM2008/18 and BIM2000/10 are supplied with self tapping screws.



UNIVERSAL ENCLOSURES

HAND HELD CASES

HEAVY DUTY ENCLOSURES

DIN RAIL ENCLOSURES

INTERFACE SUPPORTS

ELECTRICAL ENCLOSURES

DIECAST & METAL ENCLOSURES

DESKTOP & INSTRUMENT CASES

MULTI-PURPOSE & POTTING BOXES

19" ENCLOSURES

19" CABINETS

DEVELOPMENT BOARD ENCLOSURES

CUSTOM SIZED ENCLOSURES

FSPT/CUSTOM SERVICES



+44 (0)1638 716101
info@camdenboss.com
www.camdenboss.com

We operate a constant improvement policy, our products are subject to change without notice.

Ver 1.0



UNIVERSAL ENCLOSURES

UNIVERSAL ENCLOSURES

2000 Clear Lid

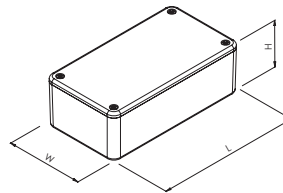
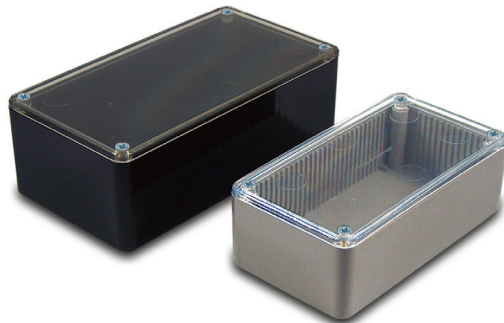
Extensive range of electronic enclosures for applications that require visible electronics such as LED's or meters.

- Lid moulded in transparent high impact ABS
- Lid mounted by four M3 machine screws
- Polished finish for ease of cleaning
- Integral mounting guides to accept 1.6mm PCB's
- PCB Adaptors (included) for horizontal PCB mounting

SPECIFICATION

Materials	Base high impact ABS Lid transparent high impact ABS
Operating temperature	Resistant to temperatures of up to 85°C
Protection class	IP54
Standard colours	Grey(GY), Black(BLK), Ivory(WH)
Standard unit includes	Base & clear lid 4x M3 machine screws PCB adaptors

GREY	BLACK	IVORY	LENGTH	WIDTH	HEIGHT
BIM2008/18-GY/CL	BIM2008/18-BLK/CL	BIM2008/18-WH/CL	55mm	55mm	42mm
BIM2000/10-GY/CL	BIM2000/10-BLK/CL	BIM2000/10-WH/CL	75mm	50mm	27mm
BIM2001/11-GY/CL	BIM2001/11-BLK/CL	BIM2001/11-WH/CL	85mm	56mm	39mm
BIM2002/12-GY/CL	BIM2002/12-BLK/CL	BIM2002/12-WH/CL	100mm	50mm	25mm
BIM2003/13-GY/CL	BIM2003/13-BLK/CL	BIM2003/13-WH/CL	112mm	62mm	31mm
BIM2007/17-GY/CL	BIM2007/17-BLK/CL	-	112mm	62mm	31mm
BIM2004/14-GY/CL	BIM2004/14-BLK/CL	BIM2004/14-WH/CL	120mm	65mm	40mm
BIM2005/15-GY/CL	BIM2005/15-BLK/CL	BIM2005/15-WH/CL	150mm	80mm	50mm
BIM2006/16-GY/CL	BIM2006/16-BLK/CL	BIM2006/16-WH/CL	190mm	110mm	60mm



HAND HELD CASES

HEAVY DUTY ENCLOSURES

DIN RAIL ENCLOSURES

INTERFACE SUPPORTS

ELECTRICAL ENCLOSURES

DIECAST & METAL ENCLOSURES

DESKTOP & INSTRUMENT CASES

MULTI-PURPOSE & POTTING BOXES

19" ENCLOSURES

19" CABINETS

DEVELOPMENT BOARD ENCLOSURES

CUSTOM SIZED ENCLOSURES

FSPT/CUSTOM SERVICES

2000 Lugged Lid

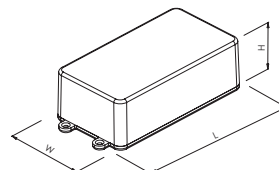
Electronics enclosures with lugged lid, for broad range of surface mounting applications. Provides extra security once mounted by restricting access to the screws in the lid.

- Lugged lid and base moulded in ABS
- Lid mounted by four M3 machine screws
- Polished finish for ease of cleaning
- Excellent properties for machining
- Integral mounting guides to accept 1.6mm PCB's
- PCB Adaptors (included) for horizontal PCB mounting

SPECIFICATION

Materials	Lid & base high impact ABS
Operating temperature	Resistant to temperatures of up to 85°C
Protection class	IP54
Standard colours	Grey(GY), Black(BLK), Ivory(WH)
Standard unit includes	Base & lugged lid 4x M3 machine screws PCB adaptors

GREY	BLACK	IVORY	LENGTH	WIDTH	HEIGHT
BIM2003/LUG-GY/GY	BIM2003/LUG-BLK/BLK	BIM2003/LUG-WH/WH	132mm	62mm	31mm
BIM2004/LUG-GY/GY	BIM2004/LUG-BLK/BLK	BIM2004/LUG-WH/WH	140mm	65mm	40mm
BIM2005/LUG-GY/GY	BIM2005/LUG-BLK/BLK	BIM2005/LUG-WH/WH	172mm	80mm	50mm



UNIVERSAL ENCLOSURES

2000 Flanged IP65

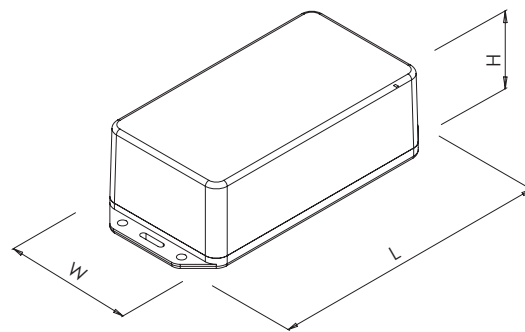
For applications requiring surface mounting and protection against dust and water ingress. Provides extra security once mounted by restricting access to the screws in the lid.

- Flanged IP65 lid and base moulded in ABS
- Lid mounted by four M3 machine screws
- Polished finish for ease of cleaning
- Excellent properties for machining
- Integral mounting guides to accept 1.6mm PCB's
- PCB Adaptors (included) for horizontal PCB mounting
- Plastic standoffs in lid for PCB mounting



SPECIFICATION	
Materials	Lid & base high impact ABS
Operating temperature	Resistant to temperatures of up to 85°C
Protection class	IP54 as standard IP65 with gasket option
Standard colours	Grey & Black
Standard unit includes	Base & flanged lid 4x M3 screws -Required torque setting 10 cNm (0.1Nm) PCB adaptors
Options	IP65 gasket kits

GREY	BLACK	LENGTH	WIDTH	HEIGHT
BIM2008/IP-GY	BIM2008/IP-BLK	75mm	57mm	43mm
BIM2000/IP-GY	BIM2000/IP-BLK	95mm	52mm	28mm
BIM2001/IP-GY	BIM2001/IP-BLK	105mm	58mm	40mm
BIM2002/IP-GY	BIM2002/IP-BLK	120mm	52mm	26mm
BIM2003/IP-GY	BIM2003/IP-BLK	132mm	64mm	32mm
BIM2004/IP-GY	BIM2004/IP-BLK	140mm	67mm	41mm
BIM2030/IP-GY	BIM2030/IP-BLK	162mm	82mm	31mm
BIM2005/IP-GY	BIM2005/IP-BLK	170mm	82mm	51mm
BIM2006/IP-GY	BIM2006/IP-BLK	210mm	112mm	61mm



2000 Series IP65 Gasket Kits

TYPE NO.	DESCRIPTION
SA00	2000/IP gasket
SA1	2001/IP gasket kit
SA2	2002/IP gasket kit
SA34	2003/IP & 2004/IP gasket kit
SA50	2005/IP & 2030/IP gasket kit
SA6	2006/IP gasket kit
SA8	2008/IP gasket

UNIVERSAL ENCLOSURES

HAND HELD CASES

HEAVY DUTY ENCLOSURES

DIN RAIL ENCLOSURES

INTERFACE SUPPORTS

ELECTRICAL ENCLOSURES

DIECAST & METAL ENCLOSURES

DESKTOP & INSTRUMENT CASES

MULTI-PURPOSE & POTTING BOXES

19" ENCLOSURES

19" CABINETS

DEVELOPMENT BOARD ENCLOSURES

CUSTOM SIZED ENCLOSURES

FSPT/CUSTOM SERVICES



+44 (0)1638 716101
info@camdenboss.com
www.camdenboss.com

We operate a constant improvement policy, our products are subject to change without notice.

Ver 1.0

CAMDENBOSS
ELECTRONICS & ENCLOSURES

UNIVERSAL ENCLOSURES

UNIVERSAL ENCLOSURES

HAND HELD CASES

HEAVY DUTY ENCLOSURES

DIN RAIL ENCLOSURES

INTERFACE SUPPORTS

ELECTRICAL ENCLOSURES

DIECAST & METAL ENCLOSURES

DESKTOP & INSTRUMENT CASES

MULTI-PURPOSE & POTTING BOXES

19" ENCLOSURES

19" CABINETS

DEVELOPMENT BOARD ENCLOSURES

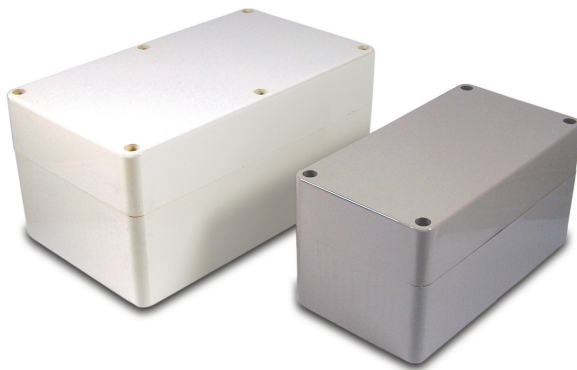
CUSTOM SIZED ENCLOSURES

FSPT/CUSTOM SERVICES

2000 Deep Profile

Multi-purpose enclosures for application where tall electrical components require housing. The deep profile 2000 Series provides maximum utilisation of the internal volume.

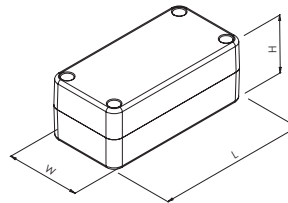
- Deep profile lid and base moulded in ABS
- Lid mounted by four M3 machine screws
- Brass inserts in base for repeated removal of the lid
- Polished finish for ease of cleaning
- Excellent properties for machining
- Integral mounting guides in base to accept 1.6mm PCB's
- PCB adaptors (included) for horizontal PCB mounting



SPECIFICATION

Materials	Lid & base high impact ABS
Operating temperature	Resistant to temperatures of up to 85°C
Protection class	IP54 as standard
Standard colours	Grey(GY), Black(BLK)
Standard unit includes	Base & deep profile lid 4x M3 machine screws

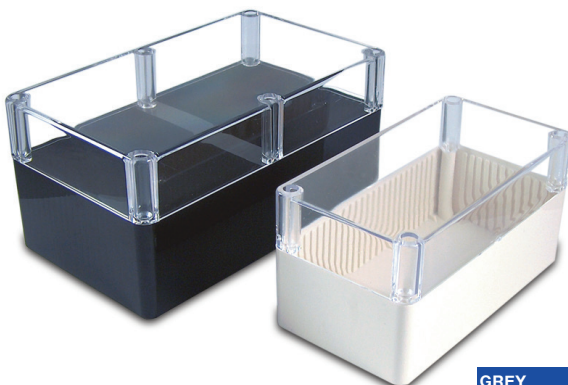
GREY	BLACK	LENGTH	WIDTH	HEIGHT
BIM2002/22-GY/GY	BIM2002/22-BLK/BLK	100mm	50mm	40mm
BIM2004/24-GY/GY	BIM2004/24-BLK/BLK	120mm	65mm	60mm
BIM2005/25-GY/GY	BIM2005/25-BLK/BLK	150mm	80mm	76mm
BIM2006/26-GY/GY	BIM2006/26-BLK/BLK	190mm	110mm	90mm



2000 Deep Profile Clear Lid

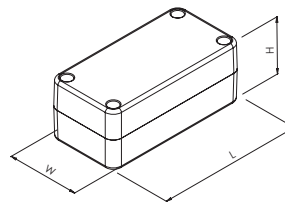
Extensive range of electronic enclosures for applications that require visible electronics and high profile components. Suitable for both electronic and electrical applications.

- Deep profile lid moulded in transparent high impact ABS
- Lid mounted by four M3 machine screws
- Brass inserts in base for repeated removal of the lid
- Polished finish for ease of cleaning
- Integral mounting guides in base to accept 1.6mm PCB's
- PCB Adaptors (included) for horizontal PCB mounting



SPECIFICATION

Materials	Base high impact ABS Lid transparent high impact ABS
Operating temperature	Resistant to temperatures of up to 85°C
Protection class	IP54
Standard colours	Grey(GY), Black(BLK) & White(WH)
Standard unit includes	Base & clear deep profile lid 4x M3 machine screws PCB adaptors



GREY	BLACK	WHITE	LENGTH	WIDTH	HEIGHT
BIM2002/22-GY/CLR	BIM2002/22-BLK/CLR	BIM2002/22-WH/CLR	100mm	50mm	40mm
BIM2004/24-GY/CLR	BIM2004/24-BLK/CLR	BIM2004/24-WH/CLR	120mm	65mm	60mm
BIM2005/25-GY/CLR	BIM2005/25-BLK/CLR	BIM2005/25-WH/CLR	150mm	80mm	76mm
BIM2006/26-GY/CLR	BIM2006/26-BLK/CLR	BIM2006/26-WH/CLR	190mm	110mm	90mm

UNIVERSAL ENCLOSURES

2000 EMC

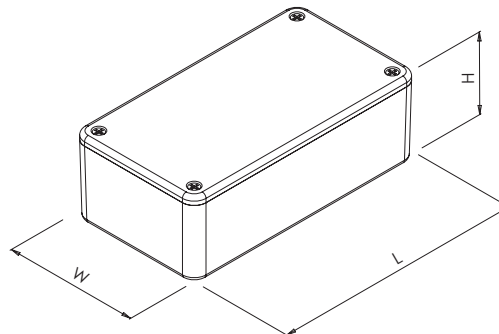
A range of high frequency EMC compliant enclosures for shielding electronic equipment.

- Lid and base moulded in ABS
- Graphite dark grey paint finish
- Electromagnetic compatibility EMC coating
- Lid mounted by four M3 machine screws
- Brass inserts in base for repeated removal of the lid
- Excellent properties for machining
- Integral mounting guides to accept 1.6mm PCB's
- PCB adaptors (included) for horizontal PCB mounting

SPECIFICATION

Materials	Lid and base high impact ABS
Operating temperature	Resistant to temperatures of up to 85°C
Protection class	IP54
Standard colours	Graphite dark grey
Standard unit includes	Base & lid 4x M3 machine screws PCB adaptors

GREY	LENGTH	WIDTH	HEIGHT
BIM2008/18-EMI/RFI	55mm	55mm	42mm
BIM2000/10-EMI/RFI	75mm	50mm	27mm
BIM2001/11-EMI/RFI	85mm	56mm	39mm
BIM2002/12-EMI/RFI	100mm	50mm	25mm
BIM2003/13-EMI/RFI	112mm	62mm	31mm
BIM2007/17-EMI/RFI	112mm	62mm	31mm
BIM2004/14-EMI/RFI	120mm	65mm	40mm
BIM2030/30-EMI/RFI	142mm	80mm	30mm
BIM2005/15-EMI/RFI	150mm	80mm	50mm
BIM2006/16-EMI/RFI	190mm	110mm	60mm
BIM2009/19-EMI/RFI	250mm	200mm	64mm



UNIVERSAL ENCLOSURES

HAND HELD CASES

HEAVY DUTY ENCLOSURES

DIN RAIL ENCLOSURES

INTERFACE SUPPORTS

ELECTRICAL ENCLOSURES

DIECAST & METAL ENCLOSURES

DESKTOP & INSTRUMENT CASES

MULTI-PURPOSE & POTTING BOXES

19" ENCLOSURES

19" CABINETS

DEVELOPMENT BOARD ENCLOSURES

CUSTOM SIZED ENCLOSURES

FSPT/CUSTOM SERVICES



+44 (0)1638 716101
info@camdenboss.com
www.camdenboss.com

We operate a constant improvement policy, our products are subject to change without notice.

Ver 1.0

CAMDENBOSS
ELECTRONICS & ENCLOSURES