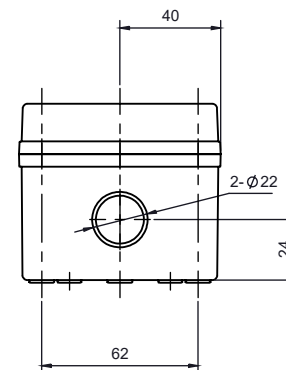
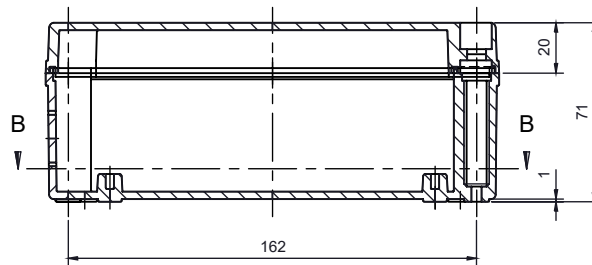
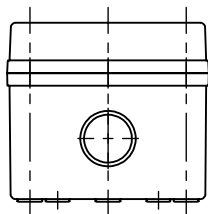
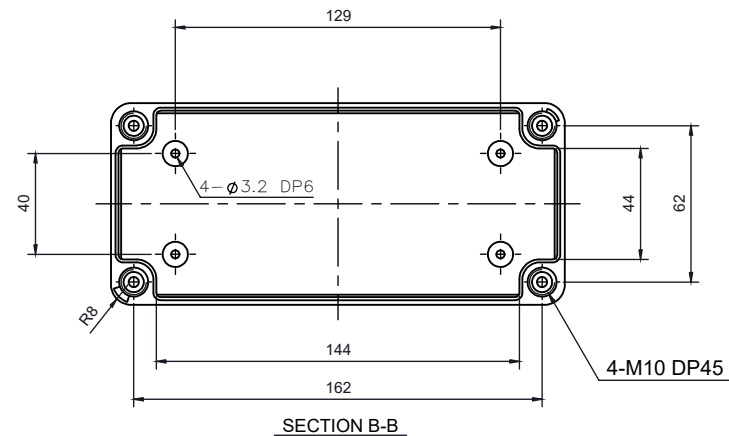
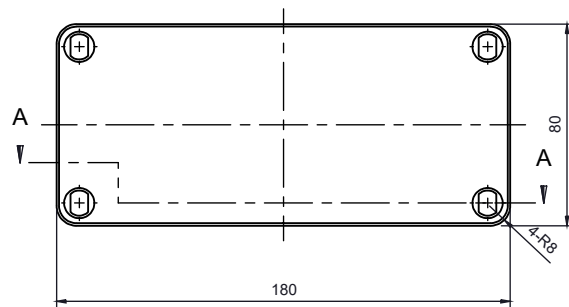




| PART NUMBER | Description |
|-------------|---------------------------|
| CHDX6-225 | Polycarb, Solid Lid |
| CHDX6-225C | Polycarb, Transparent Lid |
| CHDX6-325 | ABS, Solid Lid |
| CHDX6-325C | ABS, Transparent Lid |



SECTION A-A

SECTION B-B

| | | | | | | |
|---|--------------|-----|----------|---|---|--------------|
|  CAMDENBOSS JAMES CARTER RD, MILDENHALL, SUFFOLK. IP28 7DE TEL: 01638 716101 FAX: 01638 716554 EMAIL: Sales@CamdenBoss.com WEB: www.CamdenBoss.com | | | | UNLESS OTHERWISE SPECIFIED: DIMENSIONS ARE IN MILLIMETERS | GENERAL TOLERANCES +/- 0.2 | REVISION: ○ |
| | | | | FINISH: LID GLOSS, BASE LIGHT SPARK | TITLE: X6 Series Knock out Enclosure, 180x80x70 | |
| DRAWN | ALWIN B.K | ABK | 08/12/17 | MATERIAL: SEE TABLE | DWG NO. CHDX6 (180x80x70) | A4 |
| CHK'D | A.GOODENOUGH | A.G | 08/12/17 | PROJECTION:  | SCALE: 1:3 | SHEET 1 OF 1 |
| | | | | DO NOT SCALE DRAWING | | |