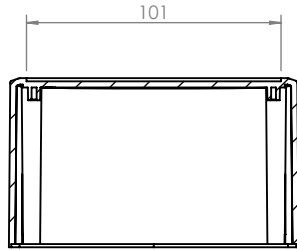


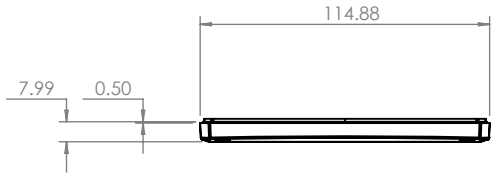
OVERALL ASSEMBLY DIMENSIONS:

EXTERNAL - 190 x 155 x 75

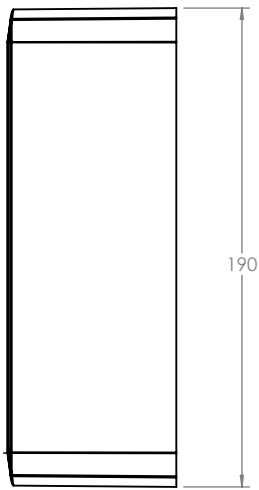
INTERNAL - 185 x 150 x 67.5



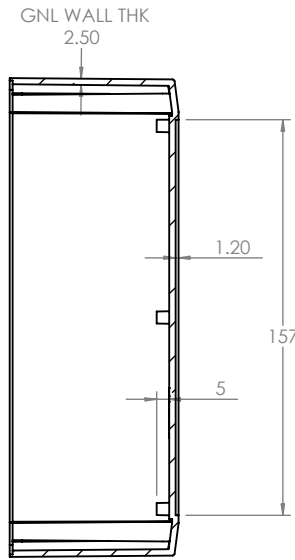
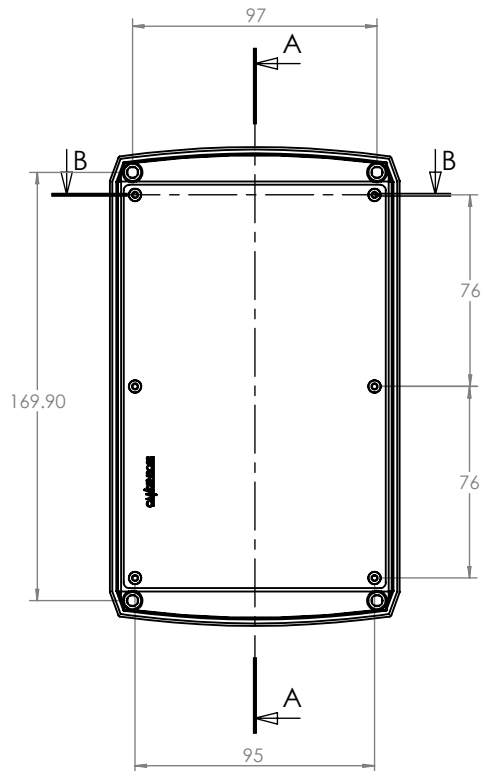
SECTION B-B



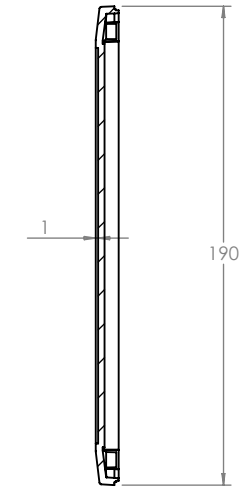
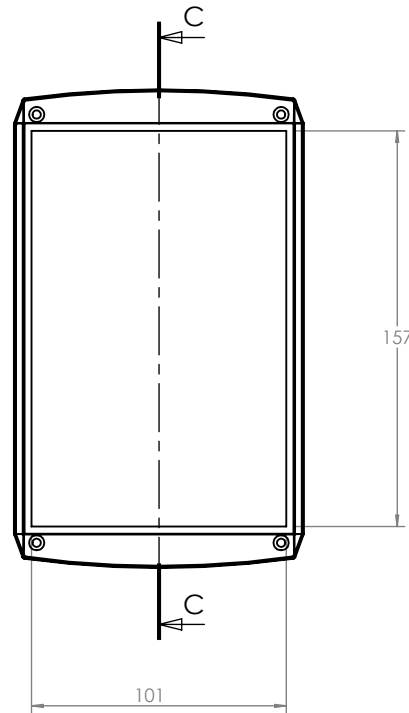
ISO VIEW
1:5



BASE

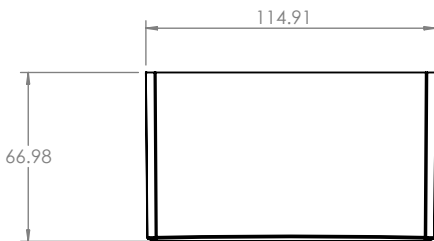



SECTION A-A



SECTION C-C

LID



 CAMDENBOSS JAMES CARTER RD, MILDENHALL, SUFFOLK. IP28 7DE TEL: 01638 716101 FAX: 01638 716554 EMAIL: Sales@CamdenBoss.com WEB: www.CamdenBoss.com				UNLESS OTHERWISE SPECIFIED: DIMENSIONS ARE IN MILLIMETERS	DO NOT SCALE DRAWING	REVISION. ○
				GENERAL TOLERANCES +/- 0.2	TITLE: GENERAL DIMENSION DRAWING FOR 1100 SERIES SIZE 4	
DRAWN	NAME	SIGNED	DATE	FINISH.	MATERIAL.	DWG NO.
CHKD	IAN PAGANO	I.P.	22/07/13	SMOOTH	ABS	CSACST005
				PROJECTION.	SCALE: 1:2	SHEET 1 OF 1
						A4